

WEFTEC 2023 FEATURED EXHIBITORS

MPT

Visit MPT at WEFTEC

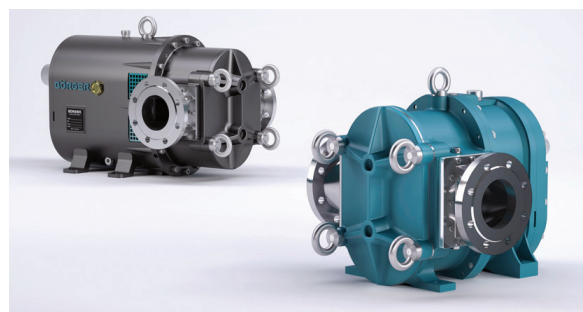
BÖRGER®

EXCELLENCE - MADE TO LAST

BOERGER
BOOTH #2018

Boerger designs, manufactures, and sells rotary lobe pumps, macerating technology, separation technology, and feeding technology to convey low to high viscous and abrasive media. Key applications can be found in wastewater applications including sludge (primary, WAS, RAS, digested, thickened, etc.), biosolids, grease, sewage, scum, lime slurry, alum sludge, permeate, polymers, etc. Boerger products are designed with maintenance-in-place, which allows for all wetted parts to be easily replaced through the front cover without the removal of pipe or drive systems.

WWW.BOERGER.COM



e|one

SEWER SYSTEMS

ENVIRONMENT ONE CORPORATION
BOOTH #1617

Are you dealing with failing septic tanks? Is I&I from your existing sewer system eating up your budget? Do you have a sewer project with challenging terrain looming ahead? Get after it. ALL-TERRAIN SEWER™ low pressure systems from E/One give you the freedom to sewer anywhere. Environmentally sensitive, economically sensible™: ALL-TERRAIN SEWER low pressure systems are significantly more affordable than conventional gravity sewers, safer than septic systems, and they're a light touch on the land. Plus, ALL-TERRAIN SEWER low pressure systems carry a proven track record of reliability with the lowest life-cycle costs in the industry. Whether it's dead or dying septic tanks or expensive inflow and infiltration, E/One can help. **WWW.EONE.COM**



weftec®
the water quality event™

Where the water community comes to connect.



GORMAN-RUPP PUMPS

BOOTH #1231

Gorman-Rupp sets the industry standard for packaged wastewater-handling pumping systems. Our ReliaSource® lift stations are 100 percent custom-engineered, manufactured, assembled, and tested by the experts at Gorman-Rupp. That means when you choose ReliaSource, you choose the ultimate in reliability, long-lasting operation, and value. We precision-match the pumps, motors, controls, valves, pipes, and accessories in every ReliaSource system for maximum compatibility and maximum performance—guaranteed.

WWW.GRPUMPS.COM



BLACOH FLUID CONTROL

BOOTH #954

Blacoh offers engineered fluid control products manufactured to exacting standards in a wide variety of sizes, materials, and pressure ratings to suit virtually every application. Blacoh has been improving process system performance, reliability, safety, and productivity for over forty-five years, so find Blacoh products wherever fluid is being pumped. Blacoh products are made in the USA for a reason—nothing gets in the way of providing Blacoh products to customers. **WWW.BLACOH.COM**



CLA-VAL COMPANY

BOOTH #3302

Since 1936, Cla-Val has produced the world's highest quality automatic control valves for diverse industries. Cla-Val has strengthened operations and customer service by enhancing product lines and building state-of-the-art production facilities around the world. With major locations having dedicated training centers, the team provides exceptional industry expertise. Aggressive R&D programs have resulted in advanced electronic and hydraulic control systems that meet the challenges of complex and diverse applications. **WWW.CLA-VAL.COM**

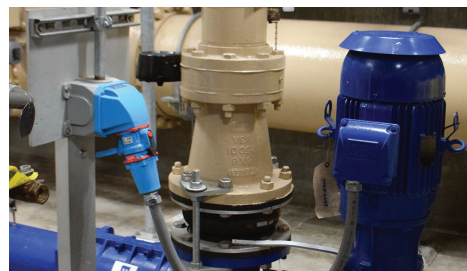


MELTRIC

BOOTH #8332

MELTRIC® Switch-Rated and UL-listed plugs and receptacles are the perfect solution for safe and reliable pump connections where watertightness is required. MELTRIC DS and DSN series are designed to make and break connections safely under full load, and they offer arc flash protection. MELTRIC Switch-Rated products are easy to use while providing users with safety, ensuring code compliance, and supporting operating cost benefits. With MELTRIC Switch-Rated plugs and receptacles, cumbersome changeout processes are streamlined, reducing downtime by up to 50 percent. Visit MELTRIC at WEFTEC or our website to learn more about our Switch-Rated products and how they can help you keep your pumps running safely and reliably.

WWW.MELTRIC.COM



Where the water community comes to connect.

the water quality event™



PEDROLLO USA

BOOTH #2263

Pedrollo USA is the American and Canadian office for Pedrollo S.p.A. and since 1974, a manufacturer of high-quality and high-efficiency pump and related products. These include jet, centrifugal and self-priming surface pumps, submersible pumps and motors, sump/sewage/effluent and grinder pumps, electronic controls, package systems, and accessories. Pedrollo is a family-owned and operated company with sales into over 160 countries. Pedrollo invests significantly in R&D to bring the most innovative products to the many markets we serve.

WWW.PEDROLLO.COM



GREASEZILLA

BOOTH #4813

GreasezillaSM solves fats, oils, and grease (FOG) processing and disposal challenges for water recovery facilities, grease haulers, industrial food processors, and managed waste sites. Greasezilla's separation process repurposes the FOG waste stream into water and clean energy resources, including a low carbon intensity bio feedstock commodity. Without the need for polymers, flocculants, or chemical additives, Greasezilla helps operators meet sustainability goals and lowers costs associated with FOG treatment and disposal. **WWW.GREASEZILLA.COM**



HOMA PUMP TECHNOLOGY

BOOTH #643

HOMA stands behind every product with a generous warranty, extensive spare parts inventory, regional authorized service centers, factory engineers and technicians who are all dedicated to the support of the entire HOMA product line. Whether your application requires a residential grinder or effluent pump, or you are handling an industrial process stream or municipal wastewater, HOMA will engineer a pumping solution for you. **WWW.HOMAPUMP.COM**



TSURUMI PUMP

BOOTH #8100

Tsurumi Pump is a world-renowned submersible pump manufacturer. The company supplies equipment for a variety of applications including wastewater treatment, mining, construction, water features, sewage bypass and more. Beyond leading pump technology, Tsurumi is recognized for its robust distribution network and one of the largest on-hand inventories in North America. At this year's WEFTEC, the company features the MY line from the Avant family of wastewater products. Avant is the ideal solution for municipal sewage and wastewater with wet and dry pit options and multiple impeller choices. Tsurumi's wastewater process equipment includes FM-approved mixers, dehydrators, aerators and bar screens. As a top exhibitor at the 2023 WEFTEC Exhibition, you can find out more about its Avant line of products by visiting Tsurumi's booth and asking for Chris Bristol.

WWW.TSURUMIPUMP.COM



Where the water community comes to connect.



VAUGHAN COMPANY

BOOTH #1412 AND #6831

When you are making plans for this year's WEFTEC, don't miss the Vaughan Conditioning Pump™ on full display during this year's Operations Challenge. As a proud sponsor of the Vaughan Maintenance Event, we invite you to come support over fifty teams from around the globe working specific scenarios that include one of our most popular pumps. American-made and built to last, the Conditioning Pump is designed to be used in several different applications to save you from costly clean out cycles and maintenance. With more than sixty-two years of experience, Vaughan Company remains committed to giving customers around the world outstanding service and the most dependable pumping solutions. Stop by and let's talk pumps! **WWW.CHOPPERPUMPS.COM**



IWAKI

BOOTH #4757

Iwaki America Inc. is one of over twenty-five global centers for the manufacturing and support of Iwaki pumps. Our sixty-plus years of pump design engineering has made us a worldwide leader of the best chemical handling equipment used in OEM, industrial, chemical process, and semiconductor applications—providing innovative, efficient solutions to a vast range of fluid handling and dispensing challenges.

WWW.IWAKIAMERICA.COM

SULZER

SULZER

BOOTH #3625

Sulzer is a global leader in the design and manufacture of fluid systems with over 200 years' experience in developing innovative products and services that support greater sustainability of our world's resources. With specialist knowledge in pumps, agitators, mixers, separators, blowers, and purification technologies, Sulzer offers high-performance products with excellent reliability and efficiency.

WWW.SULZER.COM



WEG ELECTRIC CORP.

BOOTH #1025

WEG is committed to creating quality products and efficient solutions. To achieve this, there is continuous investment in innovation and team work. Helping people reach their goals by living the values of the company is WEG's passion. At WEG, the customer is



also part of the team. Working together we can develop the best solutions. There are many approaches to efficiency at WEG. Whether it be energy saving, to reduce costs, or increase productivity, we work to fulfill the needs of our customers. We never stop because a product works well. We always look for a way to make it work even better. This constant search for improvement has led to the creation of some of the most efficient products in energy saving available on the market. **WWW.WEG.NET**



Where the water community comes to connect.