

Automation24

Automation24 is the premier online supplier for industrial automation components offering a well-rounded selection of products and solutions from sensor to control cabinet. We have been developing a comprehensive range of items from industry-leading manufacturers and offer them to our valued customers at the best prices. Order conveniently and quickly online and benefit from our cost-effective first-class products.

Our current portfolio consists of over thirty brand-named manufacturers that cover a range of products including factory automation, process instrumentation, and safety technology. Reliable process value recording and monitoring is possible with sensors from the industry leaders, ifm efector, as well as WIKA, Endress+Hauser, and Madison Company. Easy-to-install switches and signaling devices from Siemens and PATLITE ensure reliable system control and monitoring. Need to protect your automation components from external influences or the elements? We've got you covered with enclosures and control cabinets from FIBOX and Wiegmann. Ensure the utmost protection of your equipment with circuit protection solutions available from Siemens, LS Electric, and Weidmüller. High-quality PLCs, expansion IO, and communication modules from Siemens are available for both simple and complex automation tasks. Light curtains from Schmersal are offered in a variety of protection heights and safety resolutions to meet the demands of your safety application. Don't see what you are looking for in our portfolio? Let us know—our engineers are happy to help select a possible alternative or discuss getting you exactly what you need.

Throughout 2021 a variety of new items were added to the continuously growing product portfolio.

- Process instrumentation from Endress+Hauser to reliably measure and monitor pressure, temperature level, and more.
- Safety technology from Schmersal to ensure safest work environment for your applications and personnel.



All items in stock in our U.S. warehouse.



FREE application support: Customer Support Engineers standing by!

- Precision transmitters, controllers, and data loggers from NOVUS to accurately measure, control and record.

And more!

By having our own on-site warehouse here in the United States and consistent availability of products, items that are shown as available according to the real-time inventory update on our webshop will be shipped the same working day.

Need it tomorrow? No problem! Expedited delivery services are also available.

To make your purchase with us as pleasant and easy as possible, we place great emphasis on a comprehensive online service. We offer an in-shop search capability, and a filter function that separates products based on technical characteristics to simplify selection. In addition, we have a product comparison function and provide comprehensive product information. You will find answers to frequently asked questions in our FAQ section, but should you have any further questions, our outstanding technical customer service engineers are at your disposal Monday through Friday between the hours of 8:00 a.m. to 6:00 p.m. EST via phone, live chat, email, or fax. They are available to assist with product selection and provide support for your application before, during, and after your order. 🟩

Industrial components fast
at a price you can afford!



Strong brands available at automation24.com



See what our customers are saying:
Excellent 4.8 out of 5 ★ Trustpilot

“ Easy to use website,
great price, and quick
FREE shipping. ”

“ Fantastic service all around.
Knowledgeable and accessible tech support,
and above and beyond customer service. ”

“ Easy ordering and super
fast shipping. Will order
from them again. ”



Gas Clip Technologies

Gas Clip Technologies believes that quality and affordability go hand-in-hand, which is why they manufacture top-of-the-line gas detectors and accessories that meet every budget. Each product meets the highest standard of reliability and longevity to ensure that every user's safety remains uncompromised. Gas Clip's multi gas detectors are perfect examples.

MULTI GAS DETECTORS

The Multi Gas Clip was Gas Clip's first multi gas detector, and it was also the first portable gas detector in the industry to utilize infrared technology to detect combustible gases (LEL). The continuous run time of the Multi Gas Clip is two months. However, its sisters—the MGC Simple and the MGC Simple Plus—have continuous run times of two years and three years respectively. Additionally, after being charged and calibrated during manufacturing, neither the MGC Simple nor the MGC Simple Plus require recharging or routine calibration, although bump testing prior to each day's use is advised. Also, all three of these detectors are designed to identify the presence and level of hydrogen sulfide, carbon monoxide, oxygen, and combustible gases (LEL).

SINGLE GAS DETECTORS

In turn, on the days that require a single gas detector, Gas Clip Technologies has two lines to choose from—the Single Gas Clip (SGC) and the SGC Plus. Both include superior sensor reliability along with adjustable alarm set points, a programmable six-digit detector ID code and a two-year battery life. However, the SGC Plus also includes a built in “hibernate” mode that allows users to place it in a rested state when not in use. It is currently only available in one model—SGC Plus H₂S for detecting hydrogen sulfide. The SGC, on the other hand, comes in three different versions—SGC O₂, SGC H₂S, and SGC CO.



THE GCT EXTERNAL PUMP

Whether a worker uses a multi gas detector or a single gas detector, simplicity and longevity are guaranteed as is compatibility with the newest addition to Gas Clip Technologies' collection of gas detection solutions—the GCT External Pump. This accessory is a motorized sampling pump that allows any Gas Clip diffusion detector—single gas and multi gas—to take remote samples from up to 75 feet away. It has a forty-hour continuous run time on average,



and the battery typically recharges in four to six hours. Audio and visual alerts will inform the user of possible errors including blockages and a low battery charge.

Additionally, the sleek, ergonomic design of the pump allows it to sit comfortably in the user's hand, which helps prevent potential drops. However, an alligator clip allows the user to firmly attach the pump to their belt, jumpsuit, etc. as needed. Either way, if the device takes a tumble, the durable casing can withstand the fall as well as other harsh treatment. For more product information, visit www.gascliptech.com or call 972.775.7577.

CLOSING THOUGHT

After more than a decade of creating industry-changing products, including its most recent addition—the GCT External Pump—Gas Clip Technologies continues to keep its focus on the future and how to further develop simpler and even more reliable gas detection solutions that will inevitably help keep workers safer so they can return to their families at the end of the day. ■





MGC Simple + Where Simplicity Meets Reliability.

- Three-year continuous run time
- Recharging not necessary
- Recalibration not necessary
- One-button operation
- Failure alert function
- Functional in inert atmospheres
- Data logs in one-second intervals (from point-of-detection)
- LEL sensor immune to poisoning
- Detects combustible gases (LEL), H_2S , CO & O_2



Portable Gas Detectors You Can Count On
gascliptech.com +1.972.775.7577 1.877.525.0808

Contact us today for more information
about the MGC Simple+ and other
Gas Clip products.



Global Pump

Being the largest customer of your own product line provides unique insight into equipment designs that perform well. That is certainly true in the case of Global Pump and its parent company, Mersino Dewatering. Since Global Pump's inception in 1997, our standard has been to provide nothing less than cost-effective, durable products, and quality services.

Through the years, we have designed and supplied pumps and accessories for a wide variety of applications and industries. The construction and sewer industries heavily utilize our portable trash pumps capable of handling solids up to 4.5 inches. Mines, quarries, and the oil industry, which require the ability to move clean water up high elevations or over long distances, utilize our high-head pumps capable of over 700 feet of head. Our hard metal CD4MCu pumps are commonly used by the environmental and industrial sectors, while municipalities value our Global SafeGuard backup pumps and our trailer-mounted units, which are easy to use and maintain and offer low operating costs. The disaster relief and recovery industry, which urgently demands all hands and equipment on deck when nature calls, relies on Mersino to respond 24/7/365 with our extensive fleet and resources, fourteen branches nationwide, and a distributor network throughout North America.

With the exception of our rotary and piston style pumps, the Global Pump product line utilizes an enclosed impeller design which results in greater fuel efficiency than pumps with an open impeller. These fuel savings accumulate over the course of a year of continuous operation and may even add up to the cost of the brand new pump itself! For example, at a duty point of 2,500 gallons per minute at 105 feet of TDH, our 8-inch Global Standard Trash Pump (8GST) performs at an efficiency of 80 percent! That translates to an 82.8 Brake horsepower requirement and a fuel consumption of approximately 4.5 gallons per hour. How much does your pump cost you per project?

For over twenty-five years, Mersino has been the largest end-user of the Global Pump product line. Mersino's direct channel for feedback to the engineering and development teams and in-the-field research and development allows pump designs to continually evolve to meet market demands. This evolution includes



Global Pump at work during hurricane relief from Hurricane Ian.

maintaining our supreme quality, durability, and ease of use—which lend to a project's, and participating parties', profitability and success. For instance, the removable suction spool and placement of the mechanical seal on our SAE-mounted pumps allow for front removal and eliminate the need for shaft re-alignment after replacement or repair. Anyone who has experienced this repair first-hand in the field will appreciate our easier and faster option, which substantially reduces downtime on a project.

Whether you are involved with construction or mine dewatering, pipeline bypass, water transfer and supply, or emergency response, we have the pumps and expertise to meet your needs. If you dream of a purple pump on a trailer with baskets for fittings and various bells and whistles, our in-house design team can make it a reality! We can customize a pump to your specific requirements—diesel or electric, trailer or skid, trash-handling or high-head. Our applications specialists will work with you to find the right solution, customized to your situation.

Mersino is a full-service contractor with experience in design, engineering, installation, service, and on-site project management. Global Pump designs, tests, manufactures, services, sells, and rents equipment to customers around the world that is made in the USA. If you are unsure of your project needs or have a list of required dewatering/pumping equipment, the Mersino and Global Pump teams are only a phone call away—twenty-four hours a day, seven days a week. 🇺🇸

800.360.PUMP
www.globalpump.com





25TH ANNIVERSARY

GLOBAL PUMP[®]

A MERSINO COMPANY

Since Global Pump's inception in 1997, the product line has developed out of the need for a more rugged, reliable, and efficient pump. The designs are tested and proven in the field - not only by our parent company Mersino Dewatering but also by valued end-users and rental customers from around the world.

Global Pump's in-house application engineering and vertically integrated designs are unparalleled for providing solutions to tackle your pumping and groundwater challenges!



WWW.GLOBALPUMP.COM



866.360.PUMP



Gorman-Rupp Pumps

Gorman-Rupp has been revolutionizing the pumping industry since 1933. Many of the innovations introduced by Gorman-Rupp over the past eighty-five years have become industry standards.

We continue to update our machinery, processes, research and development, and engineering to ensure that our pumps and systems are among the most reliable and efficient on the market. With nearly one million square feet under roof, our facilities house some of the most modern manufacturing, testing, and warehousing facilities in the world. Our experienced engineers take advantage of the latest technologies and innovations to custom-design, manufacture, and assemble our products.

With over one million Gorman-Rupp pumps installed to date, we have the knowledge and experience understand your specific application. We provide solids- and clean-fluid handling pumping solutions for municipalities, industrial plants, construction and rental businesses, refineries and petroleum plants, mining sites, agricultural operations, and a variety of original equipment manufacturers.

One of our most successful and innovative lines of pumps has been our self-priming models. Gorman-Rupp also manufactures complete lines of submersible, priming-assisted (dry-prime), standard centrifugal, horizontal end suction centrifugal, and rotary gear products built for the most aggressive pumping applications. In addition, our ReliaSource® pump packages that incorporate these

products are designed, manufactured, and tested and include pumps, motors, piping, and controls to ensure superior operation and easy installation.

We perform rigorous testing based on Hydraulic Institute Standards and test to customers' actual operating conditions in our one-of-a-kind testing facility guaranteeing innovative, superior-quality products that are ready to tackle your toughest jobs. To ensure you get the right equipment for your requirements,



Gorman-Rupp partners with a worldwide network of distribution and provides them with the most extensive training. Gorman-Rupp distributors will work hand-in-hand with you to recommend, customize, and specify equipment. And Gorman-Rupp is always available should you ever require any assistance.

PHILOSOPHY

Gorman-Rupp stands behind the quality of our pumps to ensure they meet your requirements for the long haul. To maintain industry-leading client satisfaction well beyond product installation, we offer a variety of services to meet your needs, including world-class training, service, and industry-leading warranty.

INDUSTRY-LEADING SUPPORT AND WARRANTY

Gorman-Rupp stands behind the quality of our pumps to ensure they meet your requirements for the long haul. To maintain industry-leading client satisfaction well beyond product installation, we offer a variety of services to meet your needs, including:

INDUSTRIAL

If your application deals with abrasive, corrosive fluids, or liquids containing large solids, we have the right pump for the job. Gorman-Rupp pumps are constructed in a variety of materials to move fluids in steel mills, paper mills, underground mines, food processing, automotive and chemical plants, canneries, power plants, tanneries, glue and resin plants, and any other facility where dependability and ease of service are essential.

MUNICIPAL

When you choose Gorman-Rupp, you benefit from one of the largest and highest quality lines of municipal pumps, engine-driven pumps, sewage lift stations and water booster/reuse stations available on the market. Our ReliaSource® packaged lift and booster stations ship complete from the factory with pumps, motors, and controls and are 100 percent tested before they leave the facility to ensure product efficiency and operation. ■

GORMAN-RUPP PUMPS

P.O. Box 1217
Mansfield, Ohio 44901



THE STRONG SILENT TYPE



» SILENT PUMP. SIZED FOR PERFORMANCE.

Gorman-Rupp Prime Aire® sound-attenuated pumps are engineered to operate much quieter than industry standards. And, they are now available in sizes up to 14" with flows up to 10,000 GPM to handle your toughest bypass and dewatering applications. Features include spill containment environmental base, corrosion-resistant, acoustically treated enclosure and the latest in Tier IV engine-driven technology.

Call Gorman-Rupp at 419-755-1011 or visit GRpumps.com to find a distributor near you.



The Pump People®

Industrial Flow Solutions

TURNING FLOW PROBLEMS INTO FLOW SOLUTIONS

Industrial Flow Solutions™ (IFS) headquartered in New Haven, Connecticut, specializes in the design, manufacturing, sales, and service of wastewater pumps and controls including OverWatch® Direct In-Line Pump Systems, BJM Pumps®, Stancor®, Oil Minder® and DERAGGER™ products ideal for the municipal, industrial, commercial, and residential applications.



With over 200 years' technical and application experience, IFS supports partners through the design, build, test, install, and post-install processes. In the New Haven location, a state-of-the-art, in-house testing facility that is built to Hydraulic Institute Standards enables comprehensive testing with rapid results. With a focus on turning customers' flow problems into flow solutions, IFS products lower costs, increase efficiencies, and minimize the environmental impact. IFS is committed to offering industry leading response times with a high human touch from initial inquiry to post-installation support.

eliminating odors, and reducing maintenance. The stainless-steel body is designed to withstand the effects of corrosion from harsh materials and solutions, making OverWatch® an ideal solution for the municipal, industrial, and commercial industries.

- Save time and money with smart sensing systems that adjust in real time to manage flow and avoid clogs.
- Create safer working environments for maintenance crews by eliminating hazards associated with a wet well.
- Eliminate downtime resulting from clogged pumps.
- Increase operational efficiencies with reduced maintenance.
- Improve environmental impact with less evasive ground construction.



DERAGGER™—THE END OF RAGGING

The DERAGGER™ award winning, smart technology detects rags early and eliminates wastewater pump blockages in real time. DERAGGER is a cost saving solution for the municipal, industrial, and commercial industries. Available in a range of models, the DERAGGER offering provides intelligent data monitoring and analytics designed to meet specific application needs.

- Eliminate pump ragging by monitoring the dynamic torque waveform in real time.
- Increase pumping efficiency and reduce operational costs.



- Premium solution offers a high-resolution power analyzer that provides essential data for remote insight into the pump station.
- Modular solution may be added to new or existing control panel.

BJM PUMPS® AND STANCOR® — POWERFUL PUMPING SOLUTIONS

BJM Pumps® and Stancor® submersible pump products are designed for harsh environments to save money by minimizing downtime and increasing efficiency. This results in improved total cost of ownership over the service life of our pumps.

BJM Pumps offers tailored solutions for heavy solids-laden liquids, abrasive slurries, acidic or caustic fluids, and fluid temperatures up to 200 degrees Fahrenheit. Our industry leading Fahrenheit® series high-temperature pumps are capable of continuously handling 200-degree-Fahrenheit solutions.

Stancor® offers dewatering and solids handling submersible pumps that operate in challenging, harsh environments, including utilities, mining and oil and gas industries.

Part of the Stancor product family, the Oil Minder® solution-based system integrates submersible pumps and oil-sensing controls to deliver code compliance while reducing environmental risks.

CONTACT IFS TODAY

IFS offers industry leading lead times and unsurpassed responsiveness with a personal touch. For more information on the pumping and control solutions IFS offers, visit www.flowsolutions.com and connect with the IFS team. ■



OVERWATCH® DIRECT IN-LINE PUMP SYSTEM— CHANGING THE WORLD ONE WET WELL AT A TIME

The OverWatch®

Direct In-Line Pump System is a breakthrough technology designed to lift influent the point of entry, eliminating the wet well. Influent is contained,



OverWatch®

Direct In-Line Pump System



“OverWatch® made my job a lot less stressful”

- Marshall Duffin
Community Service Manager | Simpson Housing

Learn how OverWatch® made a difference in the full case study on [page 10](#)



INDUSTRIAL
FLOW
SOLUTIONS™

www.flowsolutions.com
sales@flowsolutions.com

Mod-Tronic Instruments

WHEN QUALITY AND PERFORMANCE ARE AS IMPORTANT AS PRICE,
YOU CAN COUNT ON OUR PROVEN BRANDS

This has been our company motto since 1972, and forty-nine years later we pride ourselves more than ever on providing our customers with quality products at competitive prices. RewindSensors.com is a market focused website of Mod-Tronic Instruments Limited. Its purpose is to display only the sensors (RTD, thermocouple, current, vibration), anti-condensation heaters, controls, and monitors applicable to the rotating machinery OEM and MRO markets.

Plus, the Mod-Tronic team's technical knowledge is unparalleled. Our sales force has over 114 years of combined experience solving our customers unique and diverse application challenges. We have earned a valued reputation in our industry for working with our customers. We take the time necessary to fully understand your application, analyze your requirements, and offer you the correct products at competitive prices. Not sure what type of temperature sensor you just pulled out of that old motor? Just ask! We have seen almost everything and can help you figure it out.

One of the secrets to Mod-Tronic's success is our team. Customer service is #1 and all of our sales people are friendly, conscientious, and motivated to get answers to our motor industry customers as quickly as possible. They recognize the inherent urgency of the motor repair industry and the need to respond to inquiries promptly with stock part solutions whenever possible.

Every week, we hear from customers calling us, "I can't believe I found someone who will talk to me that actually knows their products!" Our open office environment encourages peer-to-peer support, helping and supporting each other with any challenges or issues. Every

employee's remuneration includes a portion that is a commission on all sales, reinforcing our team approach.

Mod-Tronic is the largest Minco distributor in Canada or the United States for the rotating machinery market. We are located in Brampton, Ontario, Canada, just outside of Toronto, occupying 6,600 square feet of office and warehouse space with an additional warehouse and freight forwarding location in Warren, Michigan.

We have a low \$100 minimum order and we can ship parts the same day from stock to anywhere in Canada, the United States, or around the world. And we ship to Canada and the United States with no cross-border fees! We replenish our stock weekly so if the parts you need are not in our stock, we can still provide them quickly for you. Don't see the exact product you require? Tell us what you need, most of our manufacturers offer custom-built solutions to meet your exact requirements or we can modify stock parts as shown below.

Our emphasis on quality extends to our manufacturers. All of our manufacturers were carefully chosen for the high-quality products they produce. Especially MINCO, whom we have had a business partner relationship with since 1972.

We modify MINCO parts for quick shipment of stock parts including:

- Assembling stock sensors, fittings, connection heads, and thermowells into complete assemblies
- Programming transmitters to your sensor input type and temperature range

Ten of our thirteen key manufacturers are located in the United States and are all known for their top quality. Our other three manufacturers are located in Japan, Switzerland, and Germany. We have carefully selected our manufacturers so that their products complement each other so our customers can call us for all of their temperature sensor, thermostat, thermistor, heater, and instrumentation needs for electric motors.

We have selected manufacturers with products that do not compete with each other. We have maintained a positive long-lasting relationship with all of our manufacturers—some of them for over forty-five years! Our reputation in the market is that we only sell top quality products. Our customers know that their initial cost from us may not be the lowest but their long-term cost and headaches from failures is the absolute lowest. We are so confident in the quality of all of our suppliers that we provide a five-year limited warranty on every product we sell.

Currently, we have over 500 different part numbers in stock for a total of over 10,000 parts and \$1,000,000 of inventory. We assemble and modify our MINCO stock so that we can quickly ship many more part numbers than what is on our stock list. By modifying and assembling our stock, we can ship thousands of different assemblies next or same day for a small upcharge. ■

- Cutting RTD or thermocouple probes to the exact length you require for your application
- Cutting Teflon leads to length or stainless steel braid over Teflon lead wires to length
- Adding stainless steel armor over leads
- Removing stainless braid
- Adding bayonet mount hardware
- Adding PSA adhesive to surface mount sensors or heaters

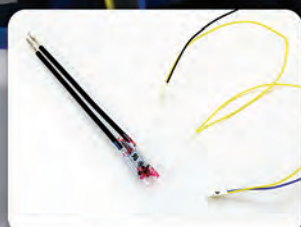
MOD-TRONIC

Stocking distributor of **MINCO**
Sensors, Heaters and Controls

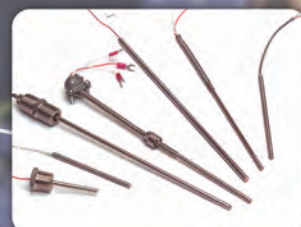
MOTOR TEMPERATURE SENSORS

RTDs Thermocouples Thermistors Thermostats

FOR STATORS



FOR BEARINGS



**ANTI-CONDENSATION
SPACE HEATERS**

**TEMPERATURE
MONITORS**



MOD-TRONIC

www.RewindSensors.com

1-800-794-5883

Pedrollo



“MADE IN ITALY” PUMPS THAT ARE SYNONYMOUS WITH QUALITY, RELIABILITY, DESIGN, AND INNOVATION

Pedrollo S.p.A., founded in San Bonifacio (Verona) in 1974, is one of the major family-owned industrial companies in Italy and is globally recognized as a benchmark in the electric water pumps industry, with more of 2.5 million pumps manufactured every year.

Pedrollo currently distributes products in more than 160 countries around the world through its ten commercial branches and through its parent company, Pedrollo Group Inc, which is led by Giulio Pedrollo, as chairman, and is now officially present in the North American marketplace through its recent acquisition of Superior Pump. Superior Pump is now part of Pedrollo Group Inc. since the majority acquisition in 4Q2020 and is active in the design, production, and marketing of pumps with a particular focus on the United States and Canada markets. Pedrollo USA is headquartered in Minneapolis, Minnesota, and led by Charlie Michel III as president.

Pedrollo is a leading company in manufacturing and supplying electrical water pumps for residential, commercial, agricultural, and industrial use. Pedrollo is a producer of a complete range of electric water pumps, motors, electronic controls—including VSD and pressure systems. With a focus on innovative products, the wide range of pump includes many diverse types of pump products, such as peripheral, centrifugal, horizontal and vertical multistage, self-priming, pool pumps, deep well submersible pump end as well as electric motors, sump, sewage, effluent, and grinder pumps. Pedrollo will also offer a wide array of accessories, electronic controls, including VSP, and pump systems and packages.

Pedrollo's headquarters occupies a significant area of space and is in

continuous expansion, and currently occupies more than 1.6 million square feet with more than 1,200 employees. Pedrollo's physical size and presence makes it a true and proper industrial district, spread over various specialized plants allowing it to offer practically the entire production and supply chain internally.

Pedrollo's highly automated systems guarantee competitiveness and is constantly investing in innovation, accounting for over 16 percent of revenues, and integrating innovative and original solutions in manufacturing, mechanics, design, electronics, and human intelligence.

The research and development performed at Pedrollo does not only concern the final product, which it holds numerous international patents, but is also applied to machinery and the productive processes employed. The required skills on both the engineering and technological levels are so elevated that, in many cases, they require the direct building of ad hoc dedicated production machinery, designed exclusively by Pedrollo Engineering of the same applied to the numerous registered patents—more than 200 exclusive and original patents—which requires maximum protection through the internal realization of processes, machinery, and safe and ergonomic systems. Such a holistic strategic choice determines a positive position of control and guarantee over both the finished products and the entire production process.

Pedrollo's worldwide success is based on a great innovative capacity sustained by constant research and a strong commitment to development. These efforts are ultimately aimed at the technical improvement of systems and products. Upon ensuring the models' functional priorities, Pedrollo continues with regular design updates: a much-appreciated detail in the market and a

distinctive sign of Italian quality. There is also a constant renewal of products also from an aesthetical point of view, making them more pleasing both to the eye and touch as well as being more efficient—another indicator of the complete attention that Pedrollo promises to its customers. Moreover, Pedrollo uses an advanced prototyping center that enables the invention and realization of new increasingly improved performing products and designed to solve to customers' ever-changing requirements. Pedrollo possesses a tradition of creativity and technology that signifies the excellence of “Made in Italy.”

Pedrollo has committed significant investment aimed at guaranteeing its own companies the capability to produce energy from renewable sources with a positive impact on the environment and society, making it almost entirely autonomous from an energy standpoint. Pedrollo has over 2.5 MW of electricity generated by solar panels and the company recovers rainwater and uses it for industrial and commercial purposes in its plants.

Innovation, quality, service, professionalism, self-reliance, and its innovation-focused business model, along with commitment to sustainability and social responsibility (www.pedrollo4people.com), are the foundations of its long-established reputation.

Pedrollo S.p.A. is a part of Pedrollo Group (www.pedrollogroup.com). ■

PEDROLLO USA

45 Maryland Avenue East,
St. Paul, Minnesota 55117
877.PEDROLLO (733.7655)
info@pedrollo-usa.com
www.pedrollo.com



- **Manufacturer of a Complete Range of Electric Water Pumps, Motors, Electronic Controls including VSD and Pressure Systems**
- **Excellent Reliability**
- **Family-Owned and Managed Company**
- **Innovative Designs**
- **100% Made in Italy**
- **High Quality, Efficiency and Performance**

PEDROLLO USA

2301 Traffic Street NE - Minneapolis, MN 55413

Email: Info@Pedrollo-USA.com - Phone: 877-PEDROLLO / 877-733-7655 - Website: www.pedrollo.com

Thelco

The Thelco team provides high-quality pump parts and pumps from our 40,000-square-foot warehouse in Englewood, Colorado. For sixty-five years, Thelco has maintained a massive inventory of parts and pumps ready to ship domestically and internationally within twenty-four hours. Our experienced and knowledgeable team, paired with an inventory of 4,500 items, on-site fabrication, and industry relationships provide our customers faster lead times and higher quality outcomes. While Thelco specializes in replicating Flowserve® and Worthington® parts and pumps, Thelco distinguishes itself with its customer service and willingness to help find solutions.

THE PARTS YOU NEED, WHEN YOU NEED THEM

Thelco supplies all of the turned parts, gaskets, shims, investment cast impeller lock washers, mechanical seals, and many cast parts for Worthington® and Flowserve® pumps.

Our expertise paired with a vast inventory of thousands of available parts and quick turnaround time shipping domestically and internationally (usually within twenty-four hours of order) helps support production across a wide variety of industries. Thelco also removes barriers to getting the job done quickly without the worry of an unexpected expense with pain-free financing options.

THELCO CAN SUPPLY MORE THAN PARTS

Thelco can also supply whole pumps and unitized pumps on a fabricated steel base. These are supplied as motor driven with coupling and coupling guards. We offer consulting from our senior engineer for your precision pump builds. Call us and

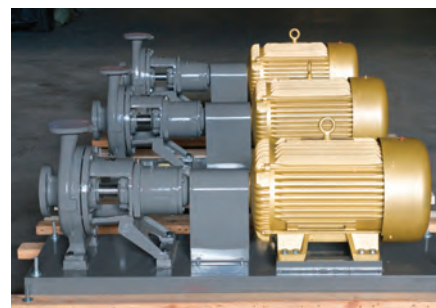
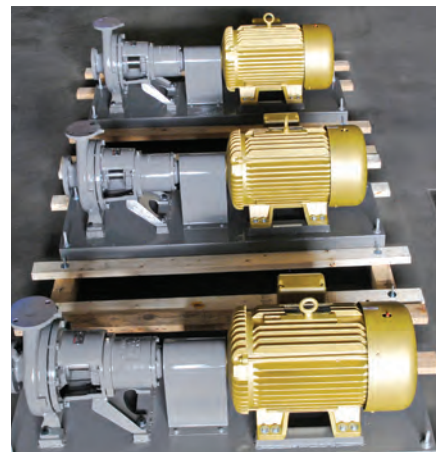
we can help select the pump for your application based on system and fluid conditions. In addition, we have a machining and repair facility on site and would welcome the opportunity to be your repair center.

VETERAN-OWNED AND FAMILY-RUN

Pumps, parts, fabrication, repair, and financing—Thelco delivers exactly what you need, when you need it. Here at Thelco, we believe the key to success lies in the dynamic relationship between the employees of our company and our customers. We've built our business by focusing on the unique needs of each customer to build strong, long-lasting relationships.

The quality of our product line speaks for itself. The Thelco team's commitment and focus on delivering again and again to our customers fuels their business. In fact, our supply of pumps and parts has grown to support a foundation of hundreds of companies we have had repeat business from for over thirty years.

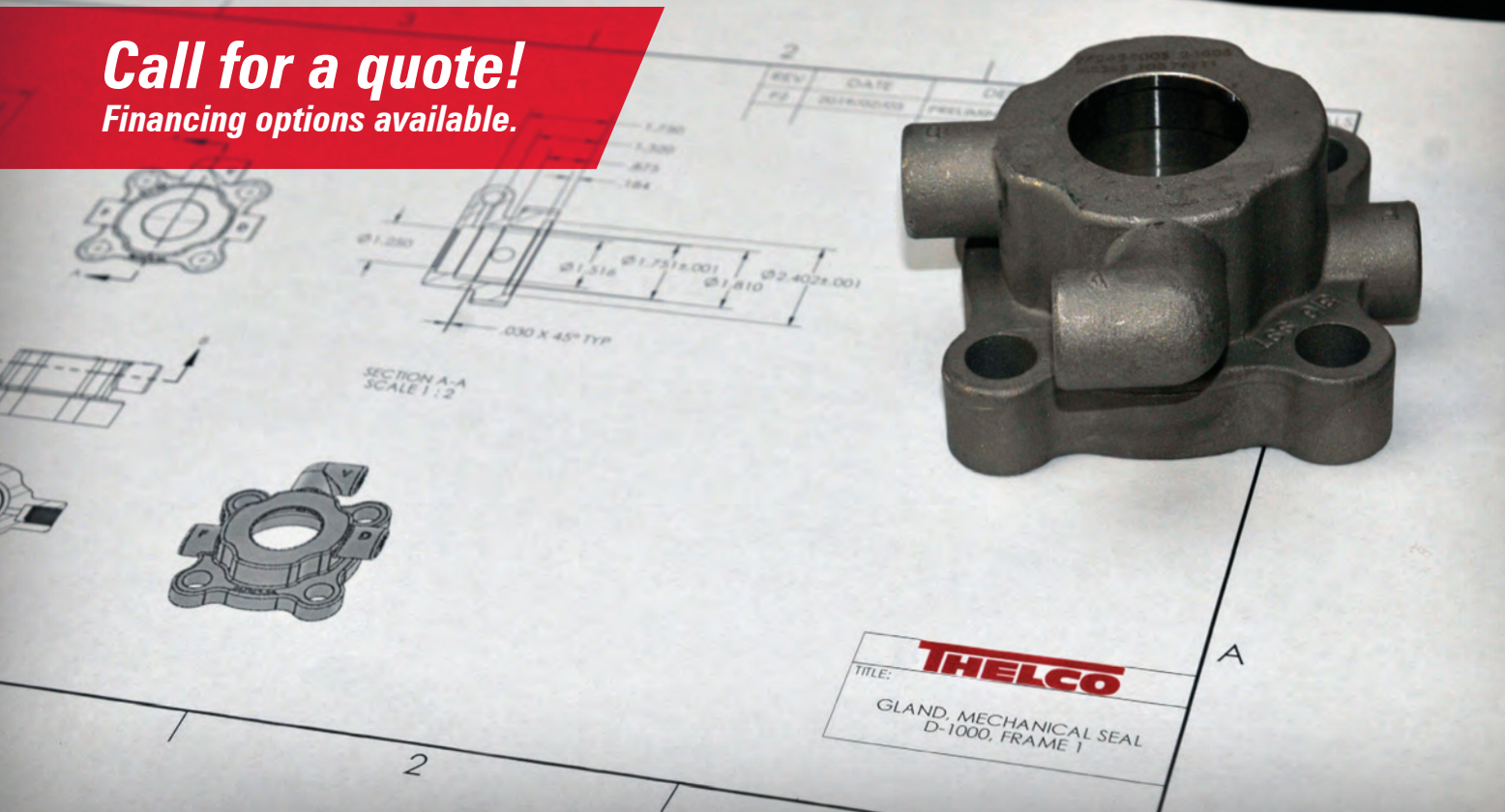
We are proud to be the first call many customers choose to make again and again. Whether it's an overnight parts delivery to a hospital or custom build of an explosion-proof pump: Thelco provides what you need to power your business. ■



THELCO

2390 West Dartmouth Avenue • Englewood, Colorado 80110
303.761.7616 • thelco.parts@thelco.com • www.thelco.com

Call for a quote!
Financing options available.



The parts you need... When you need them.

Thelco supplies all of the turned parts, gaskets, shims, investment cast impeller lock washers, mechanical seals, and many cast parts for Worthington® and Flowserve® pumps. Our expertise paired with a vast inventory of thousands of available parts, and quick turnaround time

shipping domestically and internationally (usually within twenty-four hours of order) helps support production across a wide variety of industries. Thelco also removes barriers to getting the job done quickly without the worry of an unexpected expense with pain-free financing options.



303-761-7616

thelco.parts@thelco.com

www.thelco.com

2390 West Dartmouth Avenue • Englewood, Colorado 80110

Vaughan Chopper Pumps

THE VALUE OF MADE IN AMERICA

Established in 1960, Vaughan Company® is the industry leader in reliable chopper pumps and mechanical hydraulic mixing systems. With more than sixty-two years of experience and four generations of expertise, Vaughan Company remains committed to giving customers around the world outstanding service and the most dependable pumping solutions.

Today, Vaughan Chopper Pumps are THE specified product for tough environments where other conventional pumps have failed. American-made and built to last, our pumps and systems are available in a variety of sizes and configurations to meet the unique needs of any operation.

Vaughan promises you the best in product design, reliability, dependability, and availability—plus, superior service and support to bring life-cycle costs to the lowest they can be. Our high-performing and exceptionally reliable pumps can handle the severe workloads of correctional facilities, dairy farms, wastewater treatment plants, and more.

To maintain our position as the industry leader, Vaughan Company

takes full advantage of cutting-edge technology. We incorporate in-house 3D computer modeling, which allows us to create exact fits and precision castings for all components.

All of this leads to one simple point: when you buy Vaughan, you get the best.

WORLDWIDE SOLUTIONS THAT GO BEYOND THE BARN

Since the late 1950s, “What could make this better?” was the unwavering motivation Jim Vaughan used to invent the world’s first chopper pump. After countless hours of repairing clogged manure pumps for local dairy farmers, he knew there had to be a solution.

Jim officially introduced the world’s first chopper pump in 1960, and Vaughan Company was born. His brilliant idea met a genuine need that had applications far surpassing the dairy farm. In the decades since, our operations expanded significantly. Vaughan Company now has forty worldwide issued or pending patents, providing pumps and pumping equipment across the globe.

BENEFITS OF BUYING AMERICAN MADE

For federally funded projects, Vaughan pumps and pumping equipment meet all requirements to receive federal aid under the Build America, Buy America (BABA) act. Nearly all Vaughan Company materials are produced in the U.S. and constructed in Vaughan’s 140,000-square-foot Washington state-based manufacturing facility. With an extensive \$10M inventory and strong relationships with domestic suppliers and foundries, Vaughan ensures reliable quality and fast lead times.

Not to mention, each chopper pump or mixing system is custom-built to meet the end user’s specific needs. Even without current supply chain disruptions, global sourcing would not

allow for this level of customization within a feasible timeline. In addition to fast builds, our manufacturing facility holds a large surplus of spare parts, so Vaughan products are easily maintained.

Knowing that every pump user faces a unique situation, Vaughan Company also has local sales representatives across the country to provide exceptional customer service when it is needed most—whether that is working closely with customers to tailor pump solutions for an exact situation or providing post-installation support.

PRODUCTS THAT SUPPORT AMERICA

Today, we’re still passionate about that original question: “What could make this better?” While Vaughan’s locally sourced and American-made chopper pumps keep projects moving, their benefits don’t stop there.

The answer to Jim Vaughan’s question extends beyond the walls of the manufacturing facility. As a major local employer, we strive to strengthen our community by giving to charities and community organizations. Our scholarship program supports graduates of the Elma and Montesano school districts who are planning to pursue a post-secondary degree or technical certificate in the water and wastewater sector.

Vaughan products are not just made in America, they also support the future of America. ■



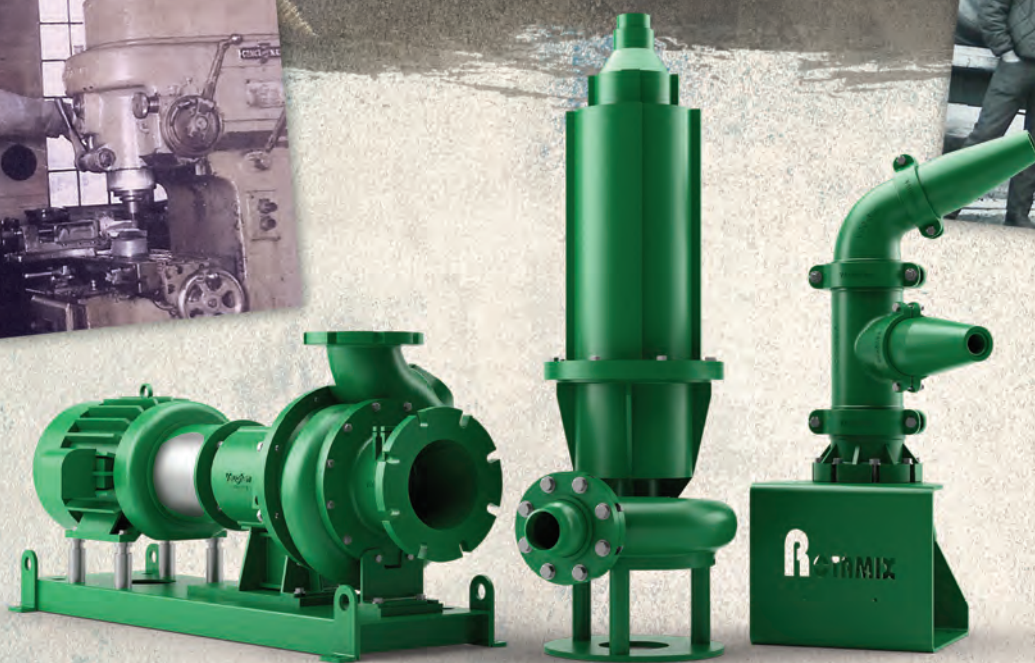
VAUGHAN CHOPPER PUMPS

Contact us

888.249.CHOP (2467)

info@chopperpumps.com

www.chopperpumps.com



PROUDLY MADE IN THE USA.

Since 1960, Vaughan Company has been manufacturing the toughest no-clog pumps in the USA. Our 3rd and 4th generation family-owned and operated company builds cutting edge products that are built to last and keep things flowing smoothly.

Choose the unmatched reliability of Vaughan. Ask about our free trial program and on-site demos.



EXPLORE THE PUMPS! | 888-249-CHOP | ChopperPumps.com

EXPEDITED DELIVERY | ELIMINATES COMMUNUTORS | EXTERNALLY ADJUSTABLE CLEARANCES

Vaughan
Unmatched Reliability

AW-Lake

AW-Lake believes in making flow measurement and control easy. From quotation to commissioning and startup, we strive to make every step simple and quick. AW-Lake offers a wide selection of flow technologies—Coriolis, positive displacement, turbine, ultrasonic, variable area, and paddle wheel—so we can match the right technology to your application. We only sell instrumentation manufactured in-house or by one of our sister companies so we can maintain the highest quality and design control to assure accuracy and long life for our products. Our expert sales team can walk you through selection of the right technology to meet your application needs.

EASY AS ONE-TWO-THREE

Measuring the flow accurately is the 1st step. AW-Lake offers a wide selection of flow technologies—

Coriolis, positive displacement, turbine, ultrasonic, variable area, and paddle wheel—so we can match the right technology to your application.

Getting you the data is next. Our sensors offer the output you want—frequency, analog, voltage, Modbus, or HART—and we make set-up and trouble-shooting easy with intuitive PC and mobile apps.

Completing your system is the final step. Our transmitters, displays and controllers make AW-Lake a one-stop-shop for industrial flow measurement, including batch control and ratio monitoring, assuring everything works well together.

COMMITMENT TO QUALITY

At AW-Lake, we recognize that an organization seeking to advance its business goals through consistent industry leadership must be managed

in a systematic and visible manner. Accordingly, we have established, documented, and implemented a quality management system that has been ISO registered since 2004. Having earned ISO 9001:2015 registration assures our customers that high standards of quality are applied from design, production, and delivery to all AW-Lake processes, products, and controls. All our products are tested and calibrated before delivery, assuring our customer the highest quality and complete satisfaction. Customers view our company as a leader in its industry.

WHAT AW-LAKE IS ABOUT

Our vision is to be a market-focused, customer-centric organization providing world-class, innovative flow measurement solutions to our customers. ■

Precision Flow Meters for Industrial Fluids

No matter your operational environment, fluid viscosity, or output requirements, AW-Lake has a flow measurement solution that will deliver reliable, accurate data in the format you need.

FLOW METER TYPES:

- Positive Displacement
- Coriolis
- Turbine
- Variable Area
- Ultrasonic
- Paddle Wheel

FLOW ELECTRONICS:

- Explosion-proof transmitters
- Battery-powered local displays
- Smart sensors w/ Bluetooth
- Batch processors
- Ratio monitors
- Industrial enclosures
- Wireless (cellular & 900 MHz)

DATA OUTPUTS:

- Modbus
- HART
- 4-20mA
- Pulse
- Voltage
- Frequency
- MQTT



Delivering the accuracy, reliability, and durability you depend on.

aw-lake.com | 414.574.4300

Blacoh Industries

Whether it's a common pumping system problem or a complex issue involving fluid dynamics, Blacoh has been providing solutions to improve the performance, reliability, safety, and productivity of pumping systems since 1976. With the most expansive offering of pulsation dampeners, surge vessels, and process system accessories in the marketplace, and backed by a team of engineering and application experts, Blacoh leads the industry in engineered solutions for systems using positive displacement pumps.

To increase pump efficiency and reduce system downtime, Blacoh's best-in-class pulsation and surge dampeners eliminate pulsations, protect pumps, pipelines, and instrumentation from destructive pressure surges, and provide a consistent laminar fluid flow. Pulsation dampeners designed for use on

the inlet side of the pump eliminate acceleration head loss and cavitation, ensure complete chamber fill, and extend pump diaphragm life. Blacoh back pressure and pressure relief valves with patented flow stabilization technology deliver improved flow and eliminate valve chatter. Blacoh rounds out their product offering with its newest line of calibration columns and injection quills for metering/dosing applications and system integrators.

For more complex systems, customers are able to leverage Blacoh's resources, working directly with engineers to design application-specific solutions, engineer custom builds, and codevelop new products. In larger scale applications where more in-depth analysis and support are required to solve critical issues with water hammer and hydraulic surge, Blacoh's Surge Control division

offers large custom surge vessels for complete system-wide solutions.

Blacoh also serves a growing need for continuous transient pressure monitoring to mitigate the risk of system failure. Their patented SurgeWave™ Transient Monitoring System gives pipeline operators the ability to detect and record transient pressure events occurring in water, wastewater and petroleum pipelines. SurgeWave™ is unique in that it employs a system of dynamic pressure transducers and high speed recording technology to monitor pipelines for indefinite periods of time.

As a full system solutions provider, Blacoh continuously tracks product performance and market demand, invests in new processes, tools and technologies, and works closely with customers to ensure Blacoh products achieve results. ■

BLACOH™ FULL SYSTEM SOLUTIONS

Pulsation Dampeners · Diaphragm Seals · Valves · Calibration Columns · Injection Quills
Spill Prevention · Transient Monitoring · Surge Vessels

With the most expansive product offering in the marketplace and backed by our team of engineers and application experts, Blacoh offers full system solutions to improve fluid process system performance, reliability, safety and productivity.



BLACOH™
INDUSTRIES
Blacoh.com
Sales@Blacoh.com
951.342.3100



Check-All Valve Mfg. Co.

Since 1958, Check-All Valve Mfg. Co. has manufactured a complete line of in-line spring-loaded piston-type check valves. With worldwide service, Check-All Valve serves a wide range of industries including the chemical, petrochemical, pharmaceutical, food and beverage, water treatment, OEM, MRO, and many others. Lightweight, efficient, and rugged, every Check-All valve is designed and built to perform to exact needs and specifications. The company is ISO 9001-2008 certified and manufactures product lines compliant with CE/PED requirements, Canadian Registration Number guidelines, 3A Sanitary Standards, and others.

Check-All valves are engineered for silent operation. They close quickly and smoothly to eliminate

hammer noise. They are designed to function equally well in either a vertical or horizontal position, with proper spring selection. They are also designed to reduce installation costs. The insert series check valves easily fit into existing line components, which reduces initial cost and installation time. The seating surfaces are parallel to each other thereby eliminating the excessive wear occurring in plug, cone and ball seats. Check-All valves can also be used as low-pressure relief valves and vacuum breakers.

With many styles available, Check-All Valve provides check valves for practically every service application. Valves are offered with metal-to-metal or soft seats in sizes ranging from 1/8-inch NPT to 20-inch flange connections. Pressure

ratings are available from full vacuum to 10,000 PSI. Standard or exotic materials are available and you can choose from a wide variety of spring settings and seat materials for any valve. Most options are available with fast delivery. Specially designed valves are another option that Check-All Valve performs on a regular basis. Check-All Valve Mfg. Co. is staffed to supply you with a quality product as well as personal technical services. ■

CHECK-ALL VALVE MFG. CO.

Contact us for a complete
catalog or see us at
www.checkall.com.

Check All your valve needs at **Check-All®**

✓ SILENT OPERATION!

Our check valves close quickly and smoothly to avoid water hammer noise and vibration.

✓ SPRING-LOADED!

Multiple spring settings as well as seat and body materials available to meet your application needs.



✓ UPSTREAM TRIM!

The upstream trim is protected from corrosive media mixing; thereby, extending valve service life.

And most lead times are less than one week. That's what makes our check valves Check-All®.



Order online at : www.checkall.com

Call us at: 515-224-2301 or
email us at: sales@checkall.com



Proudly manufactured
in the USA

Greasezilla

FATS, OILS, AND GREASE (FOG) SEPARATION

Developed by Downey Ridge Environmental Company, Greasezilla® is a turnkey system that provides an ecological and cost-effective process to divert FOG from the waste stream. Greasezilla leaves almost nothing to be landfilled and has a total operating cost of one to two cents per gallon, making Greasezilla the ideal front-end pretreatment system for FOG waste. Greasezilla eases the financial sting of ever-increasing disposal fees and labor costs while generating revenue.

Greasezilla is fully automated, making it easy to operate and maintain with minimal staffing. Each system is available in stationary or moveable configurations that are scalable to suit volume capacity.

Greasezilla is the purely ecological alternative to chemically treating,

lagooning, landfilling, incinerating, or dumping FOG waste. The system's ability to generate significant profits from FOG is encouraging liquid waste processors, pumpers, and wastewater treatment facilities to establish or upgrade their own FOG receiving stations.

THE GREASEZILLA SYSTEM

Greasezilla technology heats and separates FOG into three distinct layers:

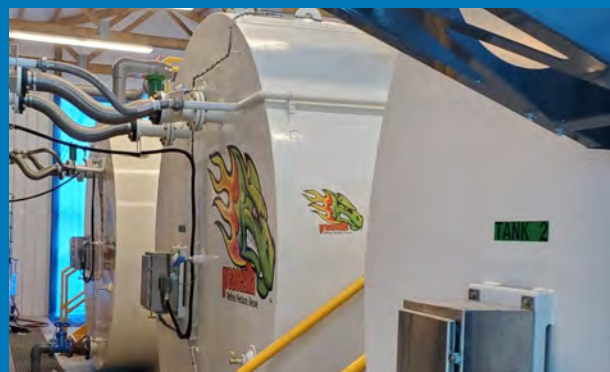
1. **Brown grease:** The recovered brown grease is also an advanced biofuel (ABF). Approximately five percent of the carbon positive biofuel returns to fuel Greasezilla, and the other 95 percent is a salable commodity. The biofuel can be used as a substitute for Fuel Oil #6. The ABF's low carbon intensity

(CI) and low-moisture content (less than 1 percent) also makes the biofuel a RIN-qualified feedstock for biodiesel, renewable diesel and sustainable aviation fuel. Greasezilla offers a service to manage biofuel sales on behalf of their clients.

2. **Batter:** Consisting of organic solids, the batter serves as an excellent feedstock for anaerobic digestion, or it can be composted.
3. **Residual pasteurized water:** The remaining water, nearly free of suspended solids, can be safely discharged into a wastewater treatment facility. ■



Join the growing family of pumpers operating Greasezilla® systems coast to coast.



Call us today! ~ 304.658.4778 ~ www.greasezilla.com ~ info@greasezilla.com

Helwig Carbon

BPK: ULTIMATE SOLUTION TO SHAFT GROUNDING

Many pumps utilize a variable frequency drive (VFD) to increase pump motor efficiency. While VFDs lower power consumption, they also induce currents onto the motor shaft. These shaft currents will often discharge through the motor bearings causing fluting, burnt grease, and eventual bearing failure. Downtime, repairs, and warranty claims can be the result of bearing failure and can be extremely costly to any company.

Helwig's BPKs (Bearing Protection Kits) have been leading the industry in shaft grounding solutions for years. Our proven silver graphite brush technology is unlike other shaft grounding system because it eliminates the need for maintenance and will keep bearings protected year-after-year. Helwig BPKs effectively

divert induced electrical currents away from the bearings, protecting them from damage and failure. What's more, our BPKs are economical, easy to install, and can be used on almost any electric motor application!

Another unique feature of the Helwig BPK solution is that one size fits most! While other shaft grounding systems need a different grounding ring for each motor shaft size, the same BPK can be applied to a variety of motor models. Our MultiFit Bracket mounting system allows for a BPK to be attached to multiple bolt designs while keeping constant contact on the motor shaft.

With the success of Helwig's BPK shaft grounding solution, the innovation has continued. Helwig Carbon's Shaft Voltage Detection Device, otherwise known as the BPK-

Probe™, is an instrument designed to measure common mode voltage on a motor shaft. Test results from the BPK-Probe will inform a user if there is current present on the motor shaft, and, therefore, show the risk of bearing damage due to electrical discharges. The patented instrument also has the capability to demonstrate the effectiveness of Helwig's Bearing Protection solution. This feature allows the user to mimic the installation of a BPK and then measure the voltage present on the shaft, proving that the parasitic shaft current is being instantly grounded through the silver graphite brush. The BPK-Probe is an excellent tool for any engineer, technician, or preventative maintenance professional that needs to evaluate motor health on a regular basis. ■

STOP BEARING FAILURE

CAUSED BY VFD-INDUCED CURRENTS

WITH HELWIG'S
INDUSTRY LEADING
SHAFT GROUNDING SOLUTION



BPK



Premature bearing failure is a major cause of motor downtime and costly repairs. Helwig Carbon uses proven silver graphite technology in a variety of bearing protection kits (BPK) for motor shaft grounding. They effectively divert electrical currents away from the bearings, protecting them from damage.

For more info, visit
www.helwigcarbon.com

Hoosier Pattern

For twenty-five years, Hoosier Pattern has always been on the cutting edge of innovation. We have consistently raised the bar in our industry while maintaining the highest quality of products for our customers.

Hoosier Pattern opened in November 1997 in a 3,000-square-foot facility with just a couple of machining centers and three owners. In 2005, Hoosier Pattern grew to fifteen employees due to customers' demands.

In 2009, Keith Gerber became sole owner of the company and continued to expand the CNC technology and employ more staff. In 2013, Hoosier Pattern became the first service center to own and operate a 3D sand printer in the United States. Today, we have five 3D sand printers in house.

Twenty-five years later, we now occupy a 90,000-square-foot facility

with state-of-the-art technology and employ over sixty employees with current technology including:

- CAD/CAM software, to design foundry tooling and create toolpaths for our CNC technology
- Over twenty-five machining centers including vertical and horizontal machining
- Five-axis machining
- CNC lathes
- Five 3D Sand Printers for Sand Molds and Cores
- Two 3D Plastic Printers
- CMM and Laser Scanning Technology
- Active Apprenticeship Program for pattern making
- Registered with the Department of Labor
- ISO Certified
- ITAR/EAR Compliant

Our employees are a vital component to our success. Without them, Hoosier Pattern would not be celebrating twenty-five years in business.

Our employees share our vision of excellence in every aspect of their jobs. Our staff is well-trained and well-educated. Hoosier Pattern stays up to date in the latest technology, allowing us to cater to our customers' needs. We also understand our customers' demand for expedient delivery times, and product excellence is a must.

Therefore, these expectations are the driving force behind our day-to-day operations. We are committed to "on-time delivery," and we're constantly striving to meet our



WE DELIVER A PATTERN OF EXCELLENCE



Get the latest information
[HoosierPattern.com](https://www.hoosierpattern.com)

See our virtual tour
[HoosierPattern.com/tour](https://www.hoosierpattern.com/tour)

Hoosier Pattern continues to be an industry leader by setting the bar high to exceed our customer's expectations. With our state-of-the-art technologies along with our highly-experienced team members, Hoosier Pattern continues to deliver the industry's best additive manufacturing molds and cores on time and every time.

WE EXCEED EXPECTATIONS

- » On Time Delivery
- » Quality Products
- » Experienced Team



Call Us Today at 260.724.9430

Schenck USA Corp

SCHENCK USA CORP. is a subsidiary of SCHENCK CORP. Its parent company is Carl Schenck AG of Darmstadt, Germany; whose shares are ultimately held by Dürr, AG of Bietigheim, Germany.

SCHENCK USA CORP. is the company's new name as a result of the merger of Schenck Trebel Corp. and Schenck RoTec Corporation into one entity that comprises Schenck's Balancing & Diagnostic Systems Group for North America under Schenck RoTec GmbH.

SCHENCK USA CORP. is on four acres in Deer Park, New York, that includes a 22,800-square-foot manufacturing and assembly plant and 17,000 square feet of office space for sales, service, administration, and engineering personnel. The company's Southfield, Michigan, location is also a manufacturing and assembly plant serving the automotive customer base with a local engineering and service support staff.

SCHENCK USA CORP. provides a range of balancing and vibration analysis equipment for the production, maintenance and repair of rotating components, and recent integration of BENZ Tooling, metal division, expands its capacities. The company's engineering staff offers a range of experience for any balancing application and maintains a close presence on the balancing committees of the International Organization for Standardization (ISO) and the Society of Automotive Engineers (SAE), to ensure the latest practices and procedures are applied. The company is ISO 9001:2015 accredited.

The service team is available for the commissioning and calibration of balancing equipment from multiple North American service points, in addition to leveraging a global service support structure.

With the company's acquisition and merger of the legal entity TEST DEVICES INC. (TDI) of Hudson, Massachusetts, into SCHENCK USA CORP. of Deer Park, New York, it expanded its capacities in the spin testing and balancing services areas and streamlined and strengthened its presence in the North American market.

SCHENCK USA CORP. today has further expanded its footprint in the aerospace industry with the acquisition of the building and property site of SCHENCK's business unit Test Devices, situated on 6.8 acres, in Hudson, Massachusetts, operating a state-of-the-art 57,000 square-foot facility with 5,500 square feet of office space, strengthening its trajectory for growth in support of increased activities with local and global markets in the e-mobility and aerospace industries. The successful business unit is an integral part of SCHENCK's business. ■

We are SCHENCK USA

- **BALANCING**



- **SPIN TESTING**



- **APPLIANCE FLUID FILL**



- **CNC TOOLING TECHNOLOGY**



- **AUTOMOTIVE FLUID FILL**



- **TESTING - END OF LINE**



SCHENCK

Passion for Balancing



Test Devices

by SCHENCK

AGRAMKOW



BENZ
TOOLING

DÜRR

LEADING IN PRODUCTION EFFICIENCY

1(800) 873-2352

sales@schenck-usa.com

schenck-usa.com

Trillium Flow Technologies

Trillium Flow Technologies™ is a global designer, manufacturer, and service provider of engineered pumps and valves for critical infrastructure, energy, and industrial applications. Our product portfolio serves our customers in the water and wastewater, power generation, oil and gas, mining, and general process industries.

In the United States, our pumps business boasts more than 220 years of combined experience providing reliable and efficient solutions that perform in the most demanding environments. We design, manufacture, and test our entire U.S. pump brand portfolio from our state-of-the-art facility in Fresno, California.

Floway® Pumps are an industry-leading vertical turbine pump in the water and wastewater, oil and gas, mining, energy, and industrial markets.

Floway® pumps can be manufactured to API, HI, and NSF requirements, using the most durable wear and corrosion-resistant materials.

Our Roto-Jet® brand encompasses high-pressure, single-stage centrifugal pumps with Pitot tube technology for low-flow, high-head applications and can be manufactured to API requirements. The Pitot tube's simple design and performance have earned the Roto-Jet® brand a reputation as the reliable and robust "go-to" solution for low-flow, high-pressure challenges.

WEMCO® is known for reliable centrifugal screw and vortex pumps with an international distribution network. WEMCO® pumps have served municipal and industrial customers in markets as diverse as water and wastewater, agri-food, solid bulk and sand applications, chemicals, and general industry for over fifty years.

The WSP® brand serves the global food and beverage processing, waste management, and material processing industries, and are designed to be rugged and dependable while simplifying maintenance and reducing life cycle costs. Our WSP® line can be manufactured according to strict API, HI, and NSF requirements.

Also included in our global pump portfolio are Begemann®, Gabbioneta Pumps®, and Termomeccanica Pompe, manufactured at our facilities in Italy. Trillium Flow Technologies™ provides complete international support, starting with highly engineered, reliable products for your industry and continuing with a unique level of support and service. Learn more about the performance engineered difference at www.trilliumflow.com.

WEMCO® is a registered trademark of FLSmidth. ■

TRILLIUM
FLOW TECHNOLOGIES™

PERFORMANCE, ENGINEERED.

Customized pump solutions coupled with through-life service throughout your water or wastewater operation.

Floway PUMPS

Termomeccanica Pompe

Floway - VHP API 610 Vertical Turbine Pump	Floway - VSB Submersible Vertical Turbine Pump	Floway - VTP General Vertical Turbine Pump	Floway - VTSP Vertical Turbine Solids Pump	Termomeccanica Pompe - Desal BB3 from TMP

trilliumflow.com

However large or small, HYDRA-CELL PUMPS

**have no packing
or seals to leak, wear
or replace.**



With its seal-less design, Hydra-Cell reduces downtime and annual maintenance costs in a wide range of OEM and processing applications. No leak path also means lower environmental containment costs. Ever reliable, Hydra-Cell pumps can handle abrasive solids up to 800 microns (depending on model) and will run dry without damage.

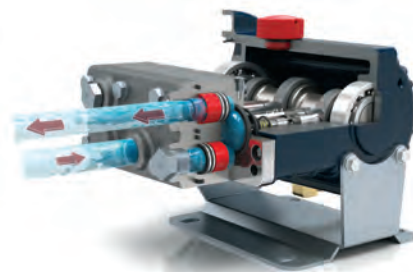
Contact us today for details.


WANNER™
HYDRA-CELL®

www.Hydra-Cell.com
sales@wannereng.com

Wanner Engineering

When William Wanner patented the Hydra-Cell positive displacement pump he invented nearly fifty years ago, he hit upon a concept for seal-less pumping technology that would develop into one of the most versatile and reliable pumps on the market today.



With its seal-less design and check valve orientation, Hydra-Cell can handle abrasive particulates that can often damage other types of pumps.

Hydra-Cell pumps provide dependable performance for applications as varied as oil and gas in upstream, midstream, and downstream needs, precise metering for chemical injection, pumping high-pressure machine tool coolant, reverse osmosis, boiler feed, and many other plant and processing operations. Its seal-less design and patented diaphragm protection control enable the pump to run dry without damage.

COMPREHENSIVE PRODUCT LINE

- Hydra-Cell seal-less pumps including the new D66 with higher pressure capability
- Hydra-Cell T & Q Series pumps including new T200 and Q330 models with higher flow capacities
- Hydra-Cell P Series & MT8 "pulse-free" metering pumps including the new P700 for a higher flow rate
- S Series solenoid metering pumps
- Stan-Cor ANSI centrifugal pumps and Vector peristaltic pumps

WORLDWIDE SALES & SERVICE

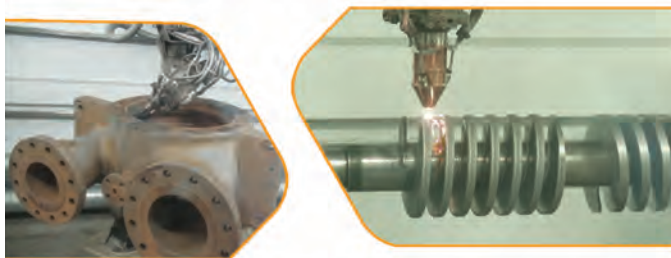
- World headquarters and manufacturing in Minneapolis
- Business units in the United Kingdom, Hong Kong, Shanghai, Brazil, and Texas
- Distributors in seventy-six countries worldwide
- More than 100 distributor locations in North America

WANNER ENGINEERING, INC.

1204 Chestnut Avenue
Minneapolis, Minnesota 55403
612.332.5681 | sales@wannereng.com
www.hydra-cell.com

Alabama Laser

Alabama Laser offers laser cladding/weld overlay services to refurbish damaged parts to OEM specs, repair worn surfaces, and enhance the properties of new parts (wear/corrosion/erosion resistance). We provide laser cladding of pump components, hydraulic shafts, electric motors, downhole tools, valve components, cylinders, boiler tubes, fittings, flanges, sleeves, bushings, and rotors. ASME code stamp certified. Additional laser and advanced machining services include laser cutting (sheet and tube), laser welding, laser etching, waterjet cutting, punching and forming, EDM, robotic welding, CNC milling, CNC screw machining, and powder coating. ■



ALABAMA LASER
256.358.9055 | als@alspi.com
www.alabamalaser.com



Laser Cladding of Pump Components

- Refurbish damaged parts to OEM specs
- Repair worn surfaces
- Provide enhanced properties for corrosion / erosion resistance






Phone: 256.358.9055 | E-mail: als@alspi.com
www.alabamalaser.com

Cla-Val

Since 1936, Cla-Val has produced the world's highest quality automatic control valves for a diverse array of industries. Cla-Val has continued to strengthen its operational and customer service capabilities around the world by enhancing product lines and building state-of-the-art production facilities and warehouses in Canada, Switzerland, France, the United Kingdom, and New Zealand.

With all our major locations having dedicated training centers, our team of sales personnel and factory authorized sales agents are able to provide exceptional industry expertise throughout the world. Our aggressive research and development programs have resulted in the design and production of technologically advanced electronic and hydraulic control systems that consistently meet the challenges of increasingly complex and diverse applications. ■

CLA-VAL
800.942.6326
info@cla-val.com • www.cla-val.com

XP2F



A non-intrusive flow metering and data acquisition solution for new and existing valves.



www.cla-val.com



Sun-Star Electric, Inc.

Sun-Star Electric, Inc. is a Texas corporation established in 1977 and is the principal worldwide distributor for Hitachi submersible motors.

Sun-Star Electric, Inc. designs and manufactures its own Sun-Star branded oil-filled and wet-wound submersible motors for standard and special applications along with the deep-ocean-capable Aqua Star motor.

Sun-Star Electric is an expert for rapid service and repair of the power generation industry's critical, high-pressure water-filled boiler water circulating pump motors.

Sun-Star Electric, Inc. maintains a 75,000-square-foot manufacturing facility, which is fully equipped for the manufacture and repair of submersible electric motors and includes full fabrication, machining, winding, and in-house testing capabilities. In 2011, SunStar Electric, Inc. transitioned to an employee-owned company (ESOP). ■



SUN-STAR ELECTRIC, INC.

7722 W. 34TH STREET
LUBBOCK, TEXAS 79407
SUNSTARUSA.COM

PHONE: 806.793.2812
800.782.9675
FAX: 806.793.1989

SUN STAR TYPE "D" WATER-FILLED MOTOR

The Sun Star Type "D" motor is a water-filled, high efficiency, submersible motor. All exposed metal components are 316 series stainless steel. The motor is completely sealed and employs an internal pressure balancing system. The mounted flange dimensions ensure a standard fit to most pump manufacturers. The Type "D" motor is designed for "across-the-line" and reduced voltage starting. It is also approved for operation with Variable Frequency Drives (VFD).

MANUFACTURING & REPAIR OF WATER FILLED MOTORS SINCE 1977

ENGINEERING & DESIGN

Type "D" motors are an engineered product and can be custom designed to fit most applications.



NSF
Certified to NSF International
& NSF/ANSI 61

FACILITY CAPABILITIES & CAPACITY

All welding, machining, component fabrication, winding, assembly, electrical and run testing accomplished in house.

EXPERIENCE

Sun-Star Electric has been designing and manufacturing motors for over 40 years. Our combined expertise with submersible motors culminates to hundreds of years of experience.



2 POLE			4 POLE		
FRAME	H.P.	VOLT	FRAME	H.P.	VOLT
10"	75 100 125	2300	12"	150 200	2300
12"	200 250 300 350	2300	14"	200 250 300 400	460 2300
14"	300 350 400 450	460 2300 4160	16"	300 350 400 450	460 2300 4160
16"	400 450 500 600 700	500 2300 4160	20"	500 600 700 800 900	2300 4160 6600

SPEEDS

3600RPM / 1800RPM (2P / 4P)

AMBIENT TEMP

25°C ambient standard w/H-Temp options available

MATERIALS OF CONSTRUCTION

316 series SS, Super Duplex, and N/AISr available

Different configurations on request



CONTACT US

7722 West 34th | Lubbock, TX 79407
O: 806.793.2812
F: 806.793.1989
T: 888.SUNSTAR
sales@sunstarusa.com
www.sunstarusa.com

Feb 2021



SUN-STAR ELECTRIC, INC.
AN EMPLOYEE OWNED COMPANY
WWW.SUNSTARUSA.COM

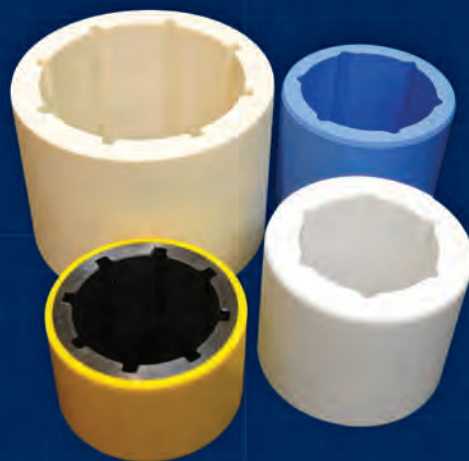
Thordon Bearings

Thordon is the world's leading manufacturer of long-lasting non-metallic bearings that require no oil or grease. They are easy to design, safely machined and install quickly. Our vertical pump bearings provide long wear life, high abrasion resistance, and can provide dry start up capability. Thordon's proven performance in vertical pumps, power plants, sewage and waste water treatment, refineries, mining, agriculture, and any industry moving water has lowered operating costs.

Our polymer bearings can also be used in aerators, flocculators, screens, butterfly valves, or virtually all applications where greased bronze bearings are currently installed. ThorPlas-White is the newest material in the Thordon bearing family, specifically developed to operate as a drinking water system component used in the treatment and distribution of potable water. It has international certification for NSF/ANSI 61 Drinking Water System Components and NSF/ANSI 51 Food Equipment Materials, as well as WRAS.

By providing engineered, customizable solutions, our bearings improve efficiency, which results in saving companies both time and money by eliminating grease, lowering life-cycle costs, improving equipment downtime, and increasing mean time between failure. Thordon bearing are available and supported globally by its worldwide network of factory-trained authorized distributors. ■

**Replace your bearings less often
with Thordon's long wear life,
abrasive resistant pump bearings.**



THORDON

www.ThordonBearings.com | info@thordonbearings.com